

**Elk Lake Dr between West Saanich Rd and Royal Oak Dr**  
April 01, 2019 To April 05, 2019



The data presented here is for information purposes only and should not be considered authoritative for construction, geotechnical, engineering, navigational, legal, or other site-specific uses. The information shared is owned by the Transportation Division of the Engineering Department at the District of Saanich. Accuracy is not guaranteed.

Start Date: 1-Apr-19  
 Start Time: 0:00  
 Station ID: C0022-02

**Location 1: Elk Lake Dr between West Saanich Rd and Royal Oak Dr**

Note: West Saanich Rd and Royal Oak Dr

DATE:	April 1, 2019		April 2, 2019		April 3, 2019		April 4, 2019		April 5, 2019		WK AVG		WK AVG	HOURLY
	MON		TUE		WED		THURS		FRI				CH 1+2	%
Time:	NB	SB	NB	SB	NB	SB	NB	SB	NB	SB	NB	SB		
12-1 AM			8	8	5	11	6	10			6	10	16	0.2%
1-2 AM			4	3	4	7	7	6			5	5	10	0.1%
2-3 AM			11	3	6	3	10	2			9	3	12	0.1%
3-4 AM			4	5	5	7	6	9			5	7	12	0.1%
4-5 AM			7	11	5	11	8	18			7	13	20	0.2%
5-6 AM			34	45	37	39	30	27			34	37	71	0.8%
6-7 AM			77	106	74	86	87	98			79	97	176	2.0%
7-8 AM			180	215	152	199	192	225			175	213	388	4.3%
8-9 AM			339	356	313	344	315	367			322	356	678	7.6%
9-10 AM			251	324	240	306	244	298			245	309	554	6.2%
10-11 AM			251	333	259	332	285	342			265	336	601	6.7%
11-12 PM			282	332	308	347	317	348			302	342	645	7.2%
12-1 PM			281	314	338	329	318	363			312	335	648	7.2%
1-2 PM			301	332	313	365	311	346			308	348	656	7.3%
2-3 PM			319	339	324	329	327	302			323	323	647	7.2%
3-4 PM			355	368	399	401	427	410			394	393	787	8.8%
4-5 PM			368	344	398	357	365	359			377	353	730	8.2%
5-6 PM			333	345	324	358	326	361			328	355	682	7.6%
6-7 PM			249	276	269	269	222	266			247	270	517	5.8%
7-8 PM			229	225	185	213	205	248			206	229	435	4.9%
8-9 PM			161	155	155	143	178	148			165	149	313	3.5%
9-10 PM			74	97	133	114	127	114			111	108	220	2.5%
10-11 PM			43	52	45	51	36	39			41	47	89	1.0%
11-12 AM			13	19	17	24	13	19			14	21	35	0.4%
<b>LANES</b>			<b>4174</b>	<b>4607</b>	<b>4308</b>	<b>4645</b>	<b>4362</b>	<b>4725</b>			<b>4281</b>	<b>4659</b>	<b>8940</b>	<b>100.0%</b>
<b>TOTAL</b>			<b>8781</b>		<b>8953</b>		<b>9087</b>				<b>8950</b>			
	MON		TUE		WED		THURS		FRI		WK AVG			

PEAK HOUR					TOTAL VEHICALS-PEAK PERIODS		2 HOUR PEAK INTERVALS							
MAX. 7 - 9 am PEAK HOUR	678	⇒	7.6%	between 8-9 AM	3771	⇒	6 HR TOTAL	<b>2 HR AM (7 - 9 AM)</b>						
MAX. 7 - 11 am PEAK HOUR	678	⇒	7.6%	between 8-9 AM	2478	⇒	4 HR TOTAL	VEH / HR	VEH / 2HR	2 HR %				
MAX. 11 am - 1 pm PEAK HOUR	648	⇒	7.2%	between 12-1 PM				7-8 AM	388	1066	11.9%			
MAX. 11 am - 3 pm PEAK HOUR	656	⇒	7.3%	between 1-2 PM				8-9 AM	678					
MAX. 4 - 6 pm PEAK HOUR	730	⇒	8.2%	between 4-5 PM				<b>2 HR NOON (11 - 1 PM)</b>						
MAX. 3 - 6 pm PEAK HOUR	787	⇒	8.8%	between 3-4 PM				VEH / HR	VEH / 2HR	2 HR %				
							<b>24 HOUR FACTORS</b>	11-12 PM	645	1292	14.5%			
							2.37 ⇒ 6-24 HR FACT.	12-1 PM	648					
							3.61 ⇒ 4-24 HR FACT.	<b>2 HR PM (4 - 6 PM)</b>						
								VEH / HR	VEH / 2HR	2 HR %				
								4-5 PM	730	1413	15.8%			
								5-6 PM	682					

# Elk Lake Dr between West Saanich Rd and Royal Oak Dr

Northbound

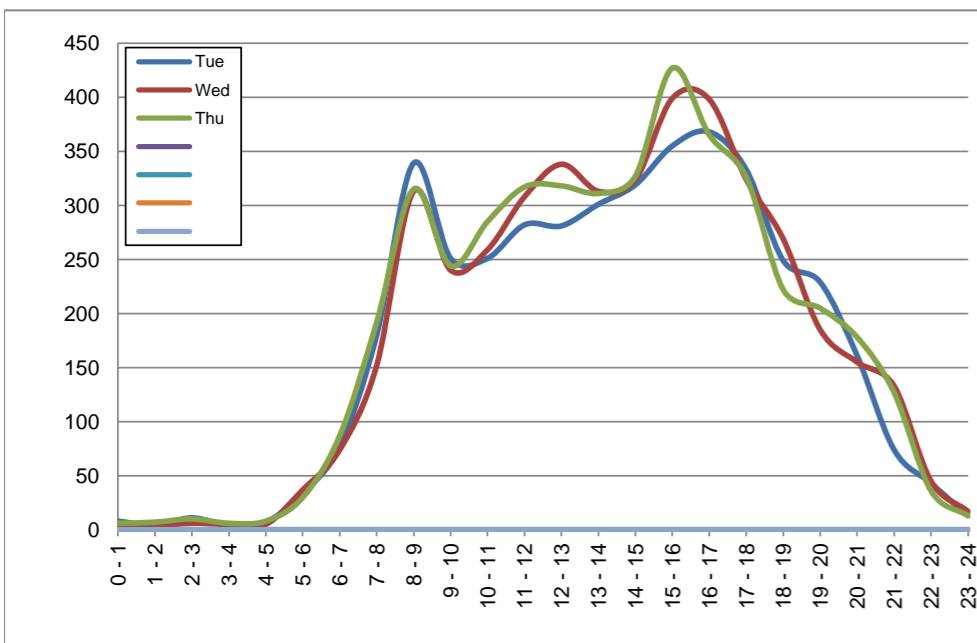
April 2, 2019 to April 4, 2019

## Hourly Volumes

Time Period	Tue	Wed	Thu			
	Apr 2	Apr 3	Apr 4			
0 - 1	8	5	6			
1 - 2	4	4	7			
2 - 3	11	6	10			
3 - 4	4	5	6			
4 - 5	7	5	8			
5 - 6	34	37	30			
6 - 7	77	74	87			
7 - 8	180	152	192			
8 - 9	339	313	315			
9 - 10	251	240	244			
10 - 11	251	259	285			
11 - 12	282	308	317			
12 - 13	281	338	318			
13 - 14	301	313	311			
14 - 15	319	324	327			
15 - 16	355	399	427			
16 - 17	368	398	365			
17 - 18	333	324	326			
18 - 19	249	269	222			
19 - 20	229	185	205			
20 - 21	161	155	178			
21 - 22	74	133	127			
22 - 23	43	45	36			
23 - 24	13	17	13			
<b>Day Total</b>	<b>4174</b>	<b>4308</b>	<b>4362</b>			

## 15-Minute Volumes

Time Start	Tue	Wed	Thu				Time Start	Tue	Wed	Thu			
	Apr 2	Apr 3	Apr 4					Apr 2	Apr 3	Apr 4			
0:00	2	2	3				12:00	73	88	75			
0:15	0	1	1				12:15	67	75	94			
0:30	3	0	0				12:30	67	92	76			
0:45	3	2	2				12:45	74	83	73			
1:00	1	0	1				13:00	77	75	80			
1:15	2	0	0				13:15	80	76	63			
1:30	1	3	2				13:30	72	74	90			
1:45	0	1	4				13:45	72	88	78			
2:00	2	2	2				14:00	98	81	81			
2:15	5	1	3				14:15	92	82	74			
2:30	1	2	2				14:30	64	84	98			
2:45	3	1	3				14:45	65	77	74			
3:00	0	0	3				15:00	85	87	79			
3:15	3	2	0				15:15	118	120	126			
3:30	0	1	0				15:30	75	93	124			
3:45	1	2	3				15:45	77	99	98			
4:00	1	1	0				16:00	90	100	104			
4:15	1	2	4				16:15	103	107	81			
4:30	2	0	2				16:30	81	94	98			
4:45	3	2	2				16:45	94	97	82			
5:00	10	4	5				17:00	103	85	98			
5:15	7	9	9				17:15	92	77	79			
5:30	11	16	10				17:30	62	76	68			
5:45	6	8	6				17:45	76	86	81			
6:00	17	10	19				18:00	68	93	65			
6:15	10	12	15				18:15	67	63	66			
6:30	19	20	21				18:30	60	47	48			
6:45	31	32	32				18:45	54	66	43			
7:00	36	24	30				19:00	65	55	62			
7:15	36	31	58				19:15	69	53	55			
7:30	55	36	40				19:30	53	32	47			
7:45	53	61	64				19:45	42	45	41			
8:00	79	61	73				20:00	51	46	49			
8:15	68	72	66				20:15	40	35	51			
8:30	86	76	77				20:30	37	41	42			
8:45	106	104	99				20:45	33	33	36			
9:00	69	73	73				21:00	19	38	41			
9:15	51	52	65				21:15	18	26	29			
9:30	57	52	47				21:30	19	44	39			
9:45	74	63	59				21:45	18	25	18			
10:00	69	67	58				22:00	26	21	11			
10:15	54	71	73				22:15	7	12	8			
10:30	66	76	78				22:30	7	7	10			
10:45	62	45	76				22:45	3	5	7			
11:00	67	69	72				23:00	2	8	4			
11:15	73	69	75				23:15	4	6	4			
11:30	79	63	89				23:30	3	3	4			
11:45	63	107	81				23:45	4	0	1			



Site notes:

# Elk Lake Dr between West Saanich Rd and Royal Oak Dr

Southbound

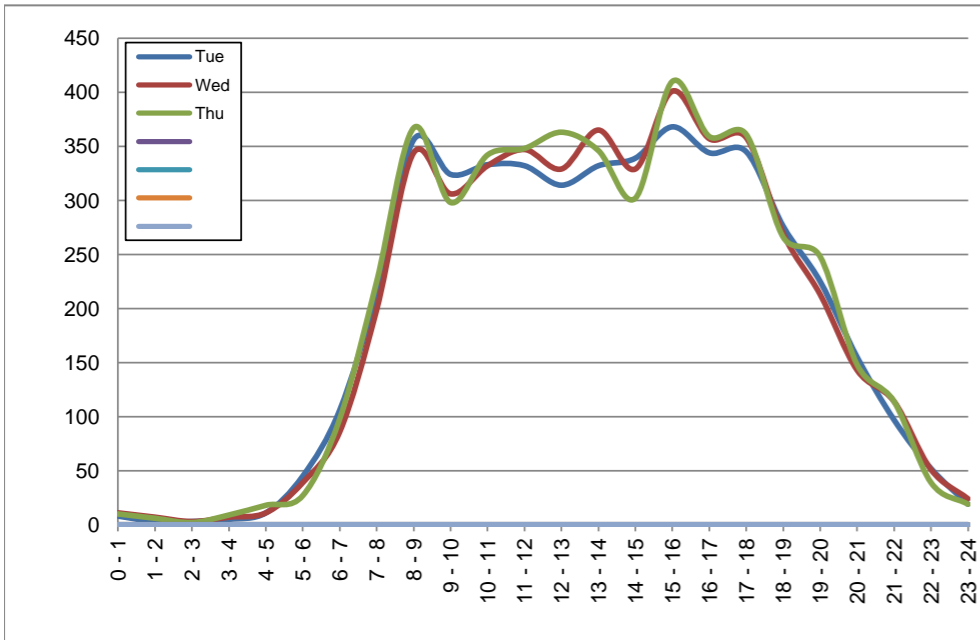
April 2, 2019 to April 4, 2019

## Hourly Volumes

Time Period	Tue	Wed	Thu			
	Apr 2	Apr 3	Apr 4			
0 - 1	8	11	10			
1 - 2	3	7	6			
2 - 3	3	3	2			
3 - 4	5	7	9			
4 - 5	11	11	18			
5 - 6	45	39	27			
6 - 7	106	86	98			
7 - 8	215	199	225			
8 - 9	356	344	367			
9 - 10	324	306	298			
10 - 11	333	332	342			
11 - 12	332	347	348			
12 - 13	314	329	363			
13 - 14	332	365	346			
14 - 15	339	329	302			
15 - 16	368	401	410			
16 - 17	344	357	359			
17 - 18	345	358	361			
18 - 19	276	269	266			
19 - 20	225	213	248			
20 - 21	155	143	148			
21 - 22	97	114	114			
22 - 23	52	51	39			
23 - 24	19	24	19			
<b>Day Total</b>	<b>4607</b>	<b>4645</b>	<b>4725</b>			

## 15-Minute Volumes

Time Start	Tue	Wed	Thu				Time Start	Tue	Wed	Thu			
	Apr 2	Apr 3	Apr 4					Apr 2	Apr 3	Apr 4			
0:00	5	6	4				12:00	81	99	97			
0:15	2	2	4				12:15	76	75	88			
0:30	1	3	2				12:30	73	82	81			
0:45	0	0	0				12:45	84	73	97			
1:00	0	1	0				13:00	86	67	86			
1:15	1	2	1				13:15	83	100	91			
1:30	0	0	4				13:30	72	109	80			
1:45	2	4	1				13:45	91	89	89			
2:00	2	1	0				14:00	87	70	79			
2:15	0	0	2				14:15	94	85	72			
2:30	1	2	0				14:30	74	82	75			
2:45	0	0	0				14:45	84	92	76			
3:00	2	2	3				15:00	89	130	122			
3:15	2	2	2				15:15	117	107	88			
3:30	1	1	2				15:30	82	87	111			
3:45	0	2	2				15:45	80	77	89			
4:00	2	2	1				16:00	83	83	91			
4:15	3	2	5				16:15	84	95	117			
4:30	3	2	6				16:30	87	84	80			
4:45	3	5	6				16:45	90	95	71			
5:00	12	2	3				17:00	79	92	81			
5:15	3	9	2				17:15	96	84	111			
5:30	10	12	11				17:30	85	80	80			
5:45	20	16	11				17:45	85	102	89			
6:00	14	13	16				18:00	80	79	66			
6:15	22	20	19				18:15	78	64	59			
6:30	34	20	29				18:30	68	74	71			
6:45	36	33	34				18:45	50	52	70			
7:00	42	32	34				19:00	65	61	85			
7:15	43	41	48				19:15	51	59	49			
7:30	56	52	50				19:30	70	47	60			
7:45	74	74	93				19:45	39	46	54			
8:00	66	61	68				20:00	57	27	44			
8:15	70	77	75				20:15	43	49	38			
8:30	98	94	89				20:30	32	28	38			
8:45	122	112	135				20:45	23	39	28			
9:00	92	92	87				21:00	27	35	30			
9:15	89	72	70				21:15	28	24	42			
9:30	78	68	59				21:30	23	27	27			
9:45	65	74	82				21:45	19	28	15			
10:00	78	86	76				22:00	25	19	15			
10:15	81	74	99				22:15	16	10	11			
10:30	84	71	88				22:30	5	13	4			
10:45	90	101	79				22:45	6	9	9			
11:00	81	77	91				23:00	6	3	5			
11:15	97	80	86				23:15	5	9	5			
11:30	71	94	88				23:30	3	8	6			
11:45	83	96	83				23:45	5	4	3			



Site notes:

# Vehicle Speed Summary

Saanich Engineering Department

Count Id: C0022-02

Filename: Elk Lake Dr between West Saanich Rd and Royal Oak Dr-Apr-2019.xlsm

**Location:** Elk Lake Dr between West Saanich Rd and Royal Oak Dr

Note: West Saanich Rd and Royal Oak Dr

Direction: **North-South**

Dates: **April 01, 2019 To April 05, 2019**

*Filtered data*

AVG. SPEED	<b>28</b> mph	<b>45</b> km/h
50 % SPEED	<b>28</b> mph	<b>45</b> km/h
85 % SPEED	<b>32</b> mph	<b>52</b> km/h
95 % SPEED	<b>35</b> mph	<b>56</b> km/h

Location Map



**Elk Lake Dr between West Saanich Rd and Royal Oak Dr**

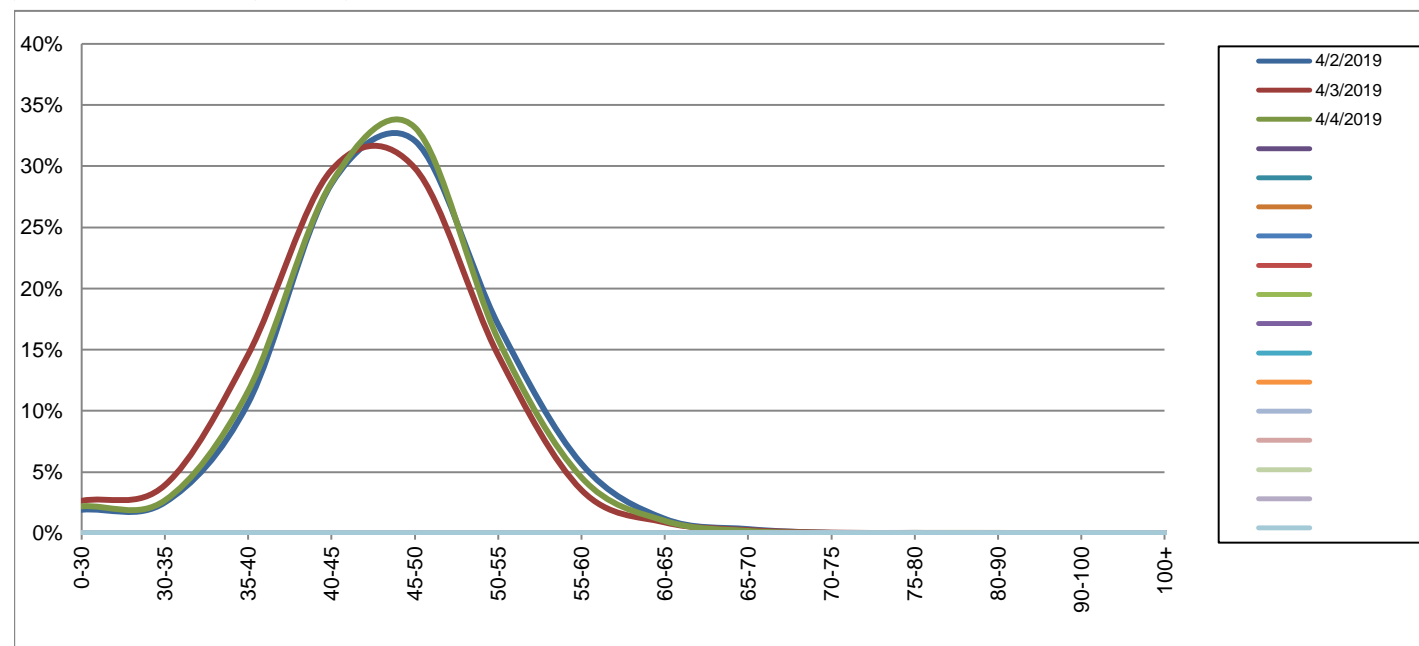
Northbound

April 2, 2019 to April 4, 2019

Daily Speed Bin Percentages															Daily Speed Bin Volumes														Total	Avg.
Bin #	1	2	3	4	5	6	7	8	9	10	11	12	13	14	1	2	3	4	5	6	7	8	9	10	11	12	13	14	Volume	Speed
Bin Speeds	0-30	30-35	35-40	40-45	45-50	50-55	55-60	60-65	65-70	70-75	75-80	80-90	90-100	100+	0-30	30-35	35-40	40-45	45-50	50-55	55-60	60-65	65-70	70-75	75-80	80-90	90-100	100+		
4/2/2019	1.9%	2.5%	10.6%	28.6%	32.1%	17.1%	5.7%	1.2%	0.3%	0.0%	0.0%	0.0%	0.0%	0.0%	80	105	444	1192	1339	712	237	49	14	1	1	0	0	0	4174	46
4/3/2019	2.6%	3.9%	14.6%	29.7%	29.9%	14.6%	3.5%	0.9%	0.3%	0.0%	0.0%	0.0%	0.0%	0.0%	114	169	629	1279	1286	627	152	38	11	2	1	0	0	0	4308	44
4/4/2019	2.2%	2.7%	11.6%	28.7%	33.2%	15.8%	4.6%	1.0%	0.2%	0.0%	0.0%	0.0%	0.0%	0.0%	96	117	507	1250	1447	691	199	44	8	1	1	1	0	0	4362	45
<b>Total</b>	2.3%	3.0%	12.3%	29.0%	31.7%	15.8%	4.6%	1.0%	0.3%	0.0%	0.0%	0.0%	0.0%	0.0%	290	391	1580	3721	4072	2030	588	131	33	4	3	1	0	0	12844	45

**Speed Data Summary**

Bin #	1	2	3	4	5	6	7	8	9	10	11	12	13	14	Total
Bin Speeds	0-30	30-35	35-40	40-45	45-50	50-55	55-60	60-65	65-70	70-75	75-80	80-90	90-100	100+	
Survey Total	290	391	1580	3721	4072	2030	588	131	33	4	3	1	0	0	12844
% Total	2.3%	3.0%	12.3%	29.0%	31.7%	15.8%	4.6%	1.0%	0.3%	0.0%	0.0%	0.0%	0.0%	0.0%	100%
Accumulated %	2.3%	5.3%	17.6%	46.6%	78.3%	94.1%	98.7%	99.7%	99.9%	100.0%	100.0%	100.0%	100.0%	100%	
Inverse Accum. %	97.7%	94.7%	82.4%	53.4%	21.7%	5.9%	1.3%	0.3%	0.1%	0.0%	0.0%	0.0%	0.0%	0.0%	
Average Speed	45 KM/H														



Site notes:

**Elk Lake Dr between West Saanich Rd and Royal Oak Dr**

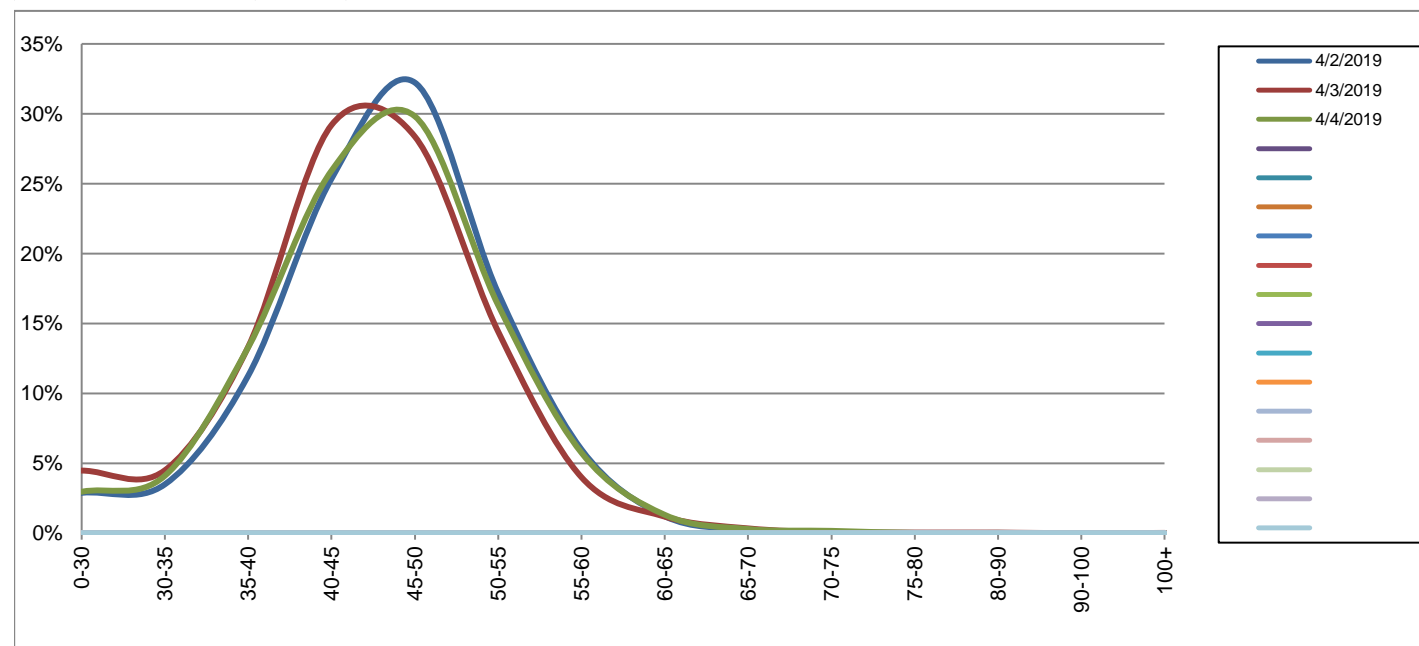
Southbound

April 2, 2019 to April 4, 2019

Daily Speed Bin Percentages															Daily Speed Bin Volumes														Total	Avg.
Bin #	1	2	3	4	5	6	7	8	9	10	11	12	13	14	1	2	3	4	5	6	7	8	9	10	11	12	13	14	Volume	Speed
Bin Speeds	0-30	30-35	35-40	40-45	45-50	50-55	55-60	60-65	65-70	70-75	75-80	80-90	90-100	100+	0-30	30-35	35-40	40-45	45-50	50-55	55-60	60-65	65-70	70-75	75-80	80-90	90-100	100+		
4/2/2019	2.9%	3.5%	11.3%	25.4%	32.2%	17.2%	6.0%	1.2%	0.3%	0.1%	0.0%	0.0%	0.0%	0.0%	133	161	519	1168	1485	792	276	56	12	3	1	1	0	0	4607	45
4/3/2019	4.5%	4.5%	13.3%	29.2%	28.4%	14.4%	4.0%	1.2%	0.3%	0.1%	0.0%	0.0%	0.0%	0.0%	208	209	619	1356	1318	670	186	55	16	3	2	2	0	1	4645	44
4/4/2019	3.0%	4.1%	13.3%	25.9%	29.8%	16.3%	5.8%	1.3%	0.3%	0.2%	0.0%	0.0%	0.0%	0.0%	140	194	628	1225	1409	771	272	62	14	8	1	1	0	0	4725	45
<b>Total</b>	3.4%	4.0%	12.6%	26.8%	30.1%	16.0%	5.3%	1.2%	0.3%	0.1%	0.0%	0.0%	0.0%	0.0%	481	564	1766	3749	4212	2233	734	173	42	14	4	4	0	1	13977	45

**Speed Data Summary**

Bin #	1	2	3	4	5	6	7	8	9	10	11	12	13	14	Total
Bin Speeds	0-30	30-35	35-40	40-45	45-50	50-55	55-60	60-65	65-70	70-75	75-80	80-90	90-100	100+	
Survey Total	481	564	1766	3749	4212	2233	734	173	42	14	4	4	0	1	13977
% Total	3.4%	4.0%	12.6%	26.8%	30.1%	16.0%	5.3%	1.2%	0.3%	0.1%	0.0%	0.0%	0.0%	0.0%	100%
Accumulated %	3.4%	7.5%	20.1%	46.9%	77.1%	93.0%	98.3%	99.5%	99.8%	99.9%	100.0%	100.0%	100.0%	100%	
Inverse Accum. %	96.6%	92.5%	79.9%	53.1%	22.9%	7.0%	1.7%	0.5%	0.2%	0.1%	0.0%	0.0%	0.0%	0.0%	
Average Speed	45 KM/H														



Site notes:

**Elk Lake Dr between West Saanich Rd and Royal Oak Dr**

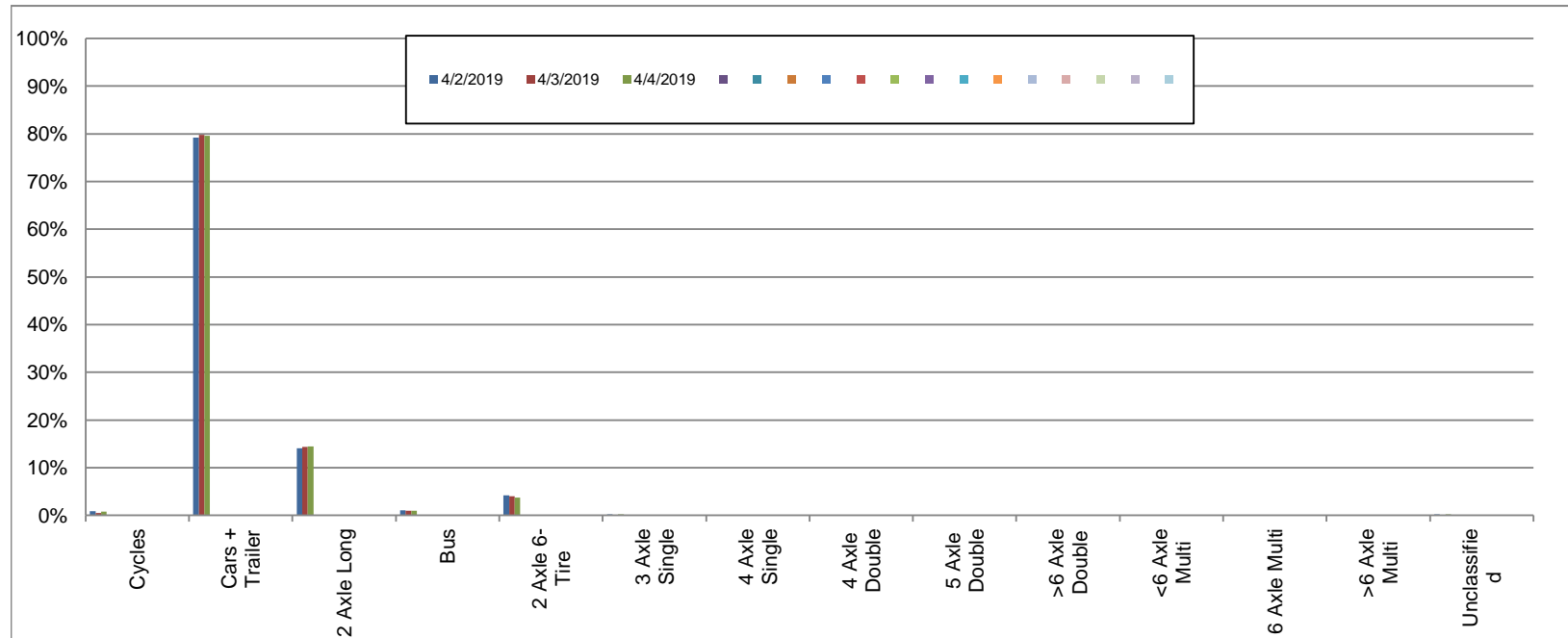
Northbound

April 2, 2019 to April 4, 2019

Daily Class Bin Percentages															Daily Class Bin Volumes														
Bin #	1	2	3	4	5	6	7	8	9	10	11	12	13	14	1	2	3	4	5	6	7	8	9	10	11	12	13	14	Total Volume
Bin Class	Cycles	Cars + Trailer	2 Axle Long	Bus	2 Axle 6-Tire	3 Axle Single	4 Axle Single	4 Axle Double	5 Axle Double	>6 Axle Double	<6 Axle Multi	6 Axle Multi	>6 Axle Multi	Unclassified	Cycles	Cars + Trailer	2 Axle Long	Bus	2 Axle 6-Tire	3 Axle Single	4 Axle Single	4 Axle Double	5 Axle Double	>6 Axle Double	<6 Axle Multi	6 Axle Multi	>6 Axle Multi	Unclassified	
4/2/2019	0.9%	79.2%	14.1%	1.1%	4.2%	0.2%	0.0%	0.0%	0.1%	0.0%	0.0%	0.0%	0.0%	0.2%	37	3306	587	46	175	7	0	2	3	1	0	0	0	10	4174
4/3/2019	0.5%	79.8%	14.4%	1.0%	4.0%	0.1%	0.0%	0.1%	0.1%	0.0%	0.0%	0.0%	0.0%	0.1%	20	3437	619	41	173	3	0	6	5	1	0	0	0	3	4308
4/4/2019	0.7%	79.6%	14.5%	1.0%	3.7%	0.2%	0.0%	0.0%	0.1%	0.0%	0.0%	0.0%	0.0%	0.2%	32	3473	631	44	162	7	1	2	3	0	0	0	0	7	4362
<b>Total</b>	<b>0.7%</b>	<b>79.5%</b>	<b>14.3%</b>	<b>1.0%</b>	<b>4.0%</b>	<b>0.1%</b>	<b>0.0%</b>	<b>0.1%</b>	<b>0.1%</b>	<b>0.0%</b>	<b>0.0%</b>	<b>0.0%</b>	<b>0.0%</b>	<b>0.2%</b>	<b>89</b>	<b>10216</b>	<b>1837</b>	<b>131</b>	<b>510</b>	<b>17</b>	<b>1</b>	<b>10</b>	<b>11</b>	<b>2</b>	<b>0</b>	<b>0</b>	<b>0</b>	<b>20</b>	<b>12844</b>

**Class Data Summary**

Bin #	1	2	3	4	5	6	7	8	9	10	11	12	13	14	Total Volume
Bin Class	Cycles	Cars + Trailer	2 Axle Long	Bus	2 Axle 6-Tire	3 Axle Single	4 Axle Single	4 Axle Double	5 Axle Double	>6 Axle Double	<6 Axle Multi	6 Axle Multi	>6 Axle Multi	Unclassified	Total Volume
<b>Survey Total</b>	89	10216	1837	131	510	17	1	10	11	2	0	0	0	20	12844
<b>% Total</b>	0.7%	79.5%	14.3%	1.0%	4.0%	0.1%	0.0%	0.1%	0.1%	0.0%	0.0%	0.0%	0.0%	0.2%	100%
<b>Accumulated %</b>	0.7%	80.2%	94.5%	95.6%	99.5%	99.7%	99.7%	99.7%	99.8%	99.8%	99.8%	99.8%	99.8%	100.0%	
<b>Inv. Accum. %</b>	99.3%	19.8%	5.5%	4.4%	0.5%	0.3%	0.3%	0.3%	0.2%	0.2%	0.2%	0.2%	0.2%	0.0%	



**Classification Descriptions**

Bin #	Bin Description
1	Motorcycles
2	Passenger cars, including those with recreational trailers
3	2-axle pick-ups, vans, and RVs, including those with recreational trailers
4	Buses
5	2-axle, 6-tire single units
6	3-axle single units
7	4-axle single units
8	3-axle or 4-axle double unit
9	5-axle double unit
10	6-, 7-, or 8-axle double unit
11	5-axle multiple unit
12	6-axle multiple unit
13	7-or-more-axle multiple unit
14	Vehicles that could not be classified

Site notes:



**Elk Lake Dr between West Saanich Rd and Royal Oak Dr**

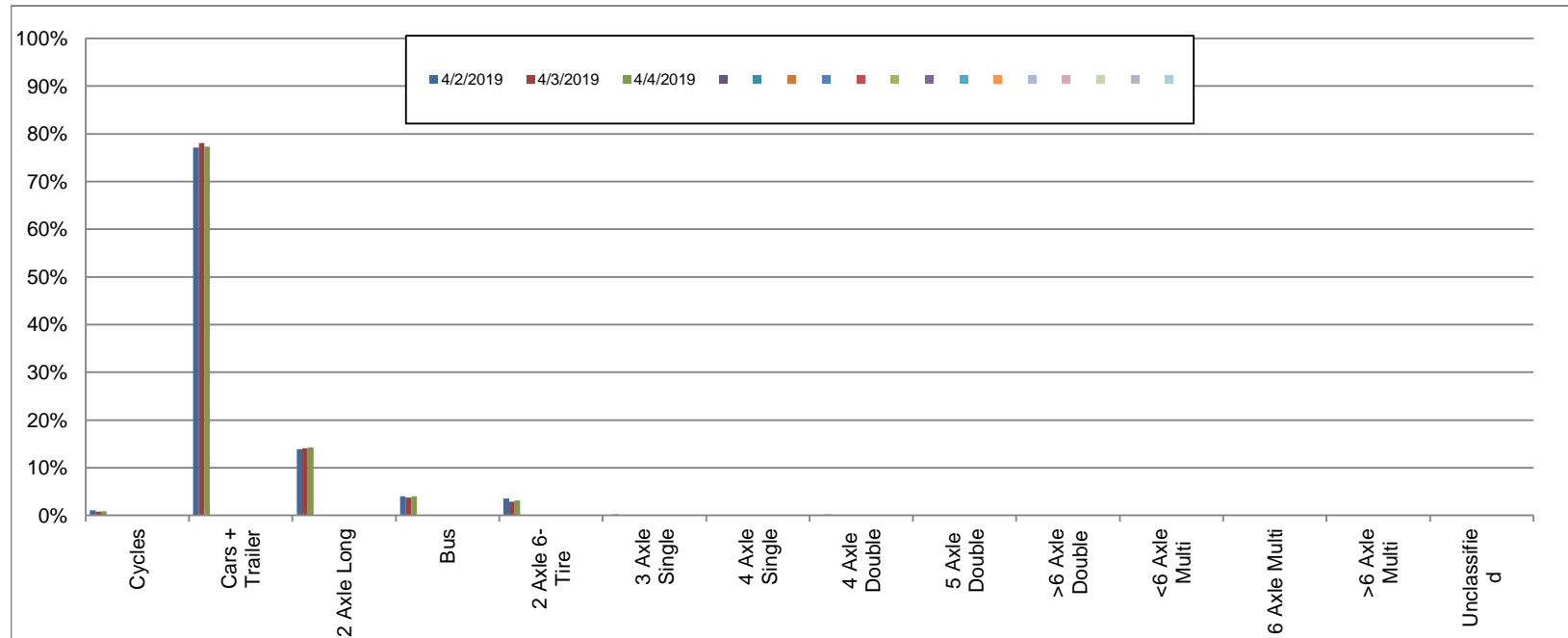
Southbound

April 2, 2019 to April 4, 2019

Daily Class Bin Percentages															Daily Class Bin Volumes														
Bin #	1	2	3	4	5	6	7	8	9	10	11	12	13	14	1	2	3	4	5	6	7	8	9	10	11	12	13	14	Total Volume
Bin Class	Cycles	Cars + Trailer	2 Axle Long	Bus	2 Axle 6-Tire	3 Axle Single	4 Axle Single	4 Axle Double	5 Axle Double	>6 Axle Double	<6 Axle Multi	6 Axle Multi	>6 Axle Multi	Unclassified	Cycles	Cars + Trailer	2 Axle Long	Bus	2 Axle 6-Tire	3 Axle Single	4 Axle Single	4 Axle Double	5 Axle Double	>6 Axle Double	<6 Axle Multi	6 Axle Multi	>6 Axle Multi	Unclassified	
4/2/2019	1.1%	77.1%	13.9%	4.0%	3.5%	0.2%	0.0%	0.1%	0.0%	0.0%	0.0%	0.0%	0.0%	0.1%	51	3551	641	183	163	7	1	3	1	1	0	0	0	5	4607
4/3/2019	0.8%	78.1%	14.1%	3.7%	2.8%	0.2%	0.0%	0.1%	0.0%	0.0%	0.0%	0.0%	0.0%	0.0%	37	3627	653	174	132	11	0	6	1	2	0	0	1	1	4645
4/4/2019	0.9%	77.3%	14.3%	4.0%	3.2%	0.1%	0.0%	0.2%	0.0%	0.0%	0.0%	0.0%	0.0%	0.0%	43	3652	676	187	150	7	0	8	0	0	0	0	0	2	4725
<b>Total</b>	0.9%	77.5%	14.1%	3.9%	3.2%	0.2%	0.0%	0.1%	0.0%	0.0%	0.0%	0.0%	0.0%	0.1%	131	10830	1970	544	445	25	1	17	2	3	0	0	1	8	13977

**Class Data Summary**

Bin #	1	2	3	4	5	6	7	8	9	10	11	12	13	14	Total Volume
Bin Class	Cycles	Cars + Trailer	2 Axle Long	Bus	2 Axle 6-Tire	3 Axle Single	4 Axle Single	4 Axle Double	5 Axle Double	>6 Axle Double	<6 Axle Multi	6 Axle Multi	>6 Axle Multi	Unclassified	Total Volume
<b>Survey Total</b>	131	10830	1970	544	445	25	1	17	2	3	0	0	1	8	13977
<b>% Total</b>	0.9%	77.5%	14.1%	3.9%	3.2%	0.2%	0.0%	0.1%	0.0%	0.0%	0.0%	0.0%	0.0%	0.1%	100%
<b>Accumulated %</b>	0.9%	78.4%	92.5%	96.4%	99.6%	99.8%	99.8%	99.9%	99.9%	99.9%	99.9%	99.9%	99.9%	100.0%	
<b>Inv. Accum. %</b>	99.1%	21.6%	7.5%	3.6%	0.4%	0.2%	0.2%	0.1%	0.1%	0.1%	0.1%	0.1%	0.1%	0.0%	



**Classification Descriptions**

Bin #	Bin Description
1	Motorcycles
2	Passenger cars, including those with recreational trailers
3	2-axle pick-ups, vans, and RVs, including those with recreational trailers
4	Buses
5	2-axle, 6-tire single units
6	3-axle single units
7	4-axle single units
8	3-axle or 4-axle double unit
9	5-axle double unit
10	6-, 7-, or 8-axle double unit
11	5-axle multiple unit
12	6-axle multiple unit
13	7-or-more-axle multiple unit
14	Vehicles that could not be classified

Site notes: